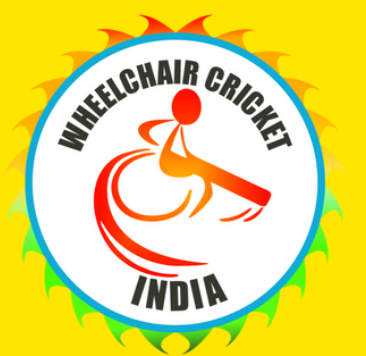


DISABILITY RELATED MISCONCEPTIONS & PERCEPTIONS



#NoticeKaroIndia

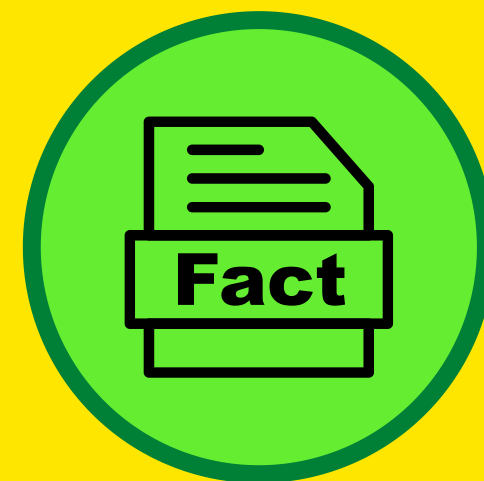
A WCIA INITIATIVE



All persons who use wheelchairs are **CHRONICALLY ILL OR SICK**



A person may use a wheelchair for a variety of reasons, **none of which may have anything to do with lingering illness.**



#NoticeKaroIndia

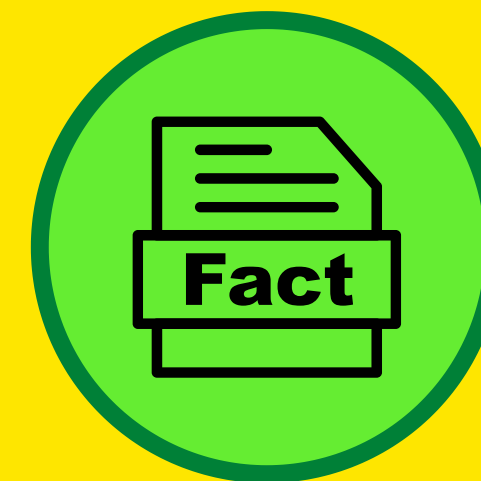
A WCIA INITIATIVE



**WHEELCHAIR USE IS CONFINING;
PEOPLE WHO USE WHEELCHAIRS
ARE "WHEELCHAIR-BOUND."**



A wheelchair, like a bicycle or an automobile, is a **personal assistive device** that enables someone to get around.



#NoticeKaroIndia

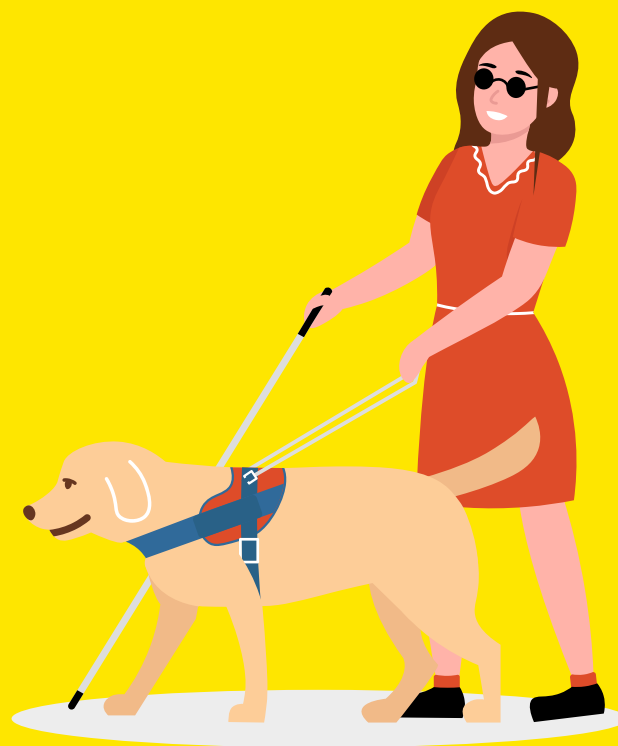
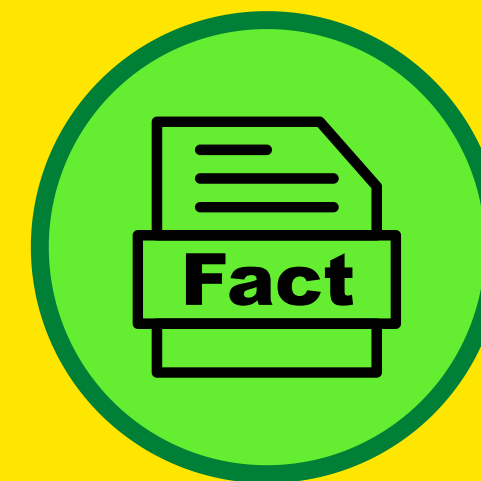
A WCIA INITIATIVE



**PEOPLE WHO ARE BLIND
ACQUIRE A "SIXTH SENSE."**



Although most people who are blind **develop their remaining senses more fully**, they do not have a "sixth sense."



#NoticeKaroIndia

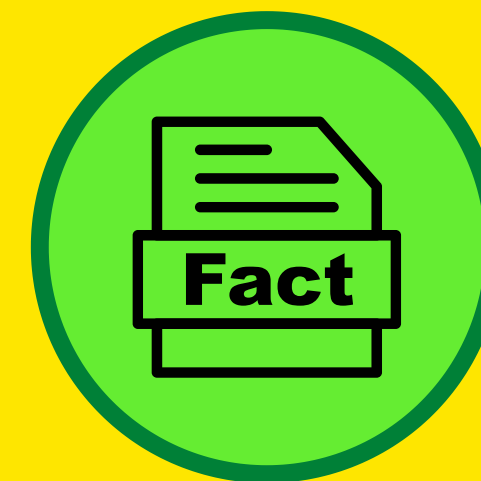
A WCIA INITIATIVE



**PEOPLE WITH DISABILITIES
ARE MORE COMFORTABLE
WITH "THEIR OWN KIND."**



Grouping people with disabilities in separate schools and institutions reinforced this misconception & hampered Social Inclusion.

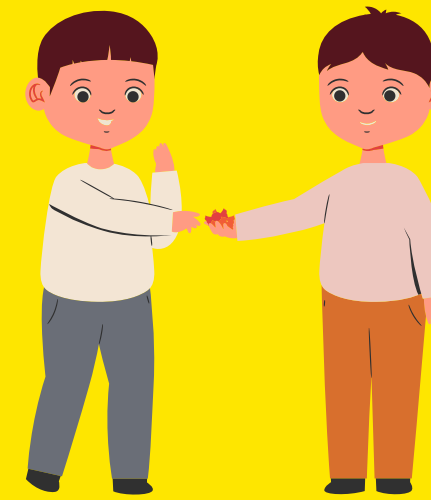


#NoticeKaroIndia

A WCIA INITIATIVE

 **DOWNLOAD**

#NoticeKaroIndia



**SHARE
WITH YOUR
FRIENDS**



A WHEELCHAIR CRICKET INDIA ASSOCIATION INITIATIVE

**#NOTICEKAROINDIA CAMPAIGN HELPLINE
WHATSAPP YOUR PHOTOS ON +91 87650 97 543**



wcia_official 



wccricketindia



wcia.official 



Wheelchair Cricket India Association



www.wcia.tv



office@wcia.tv



+91 9651 79 0298